



LaserForm[®] CoCr (B)

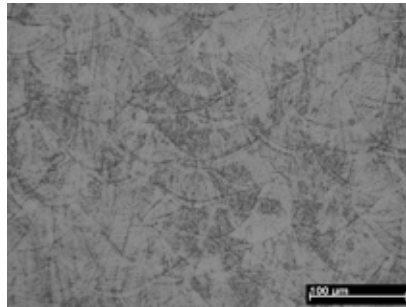
for ProX[®] DMP 100, 200 and 300 Direct Metal Printers

Metal powder for additive manufacturing of highly corrosion-resistant industrial parts that require high temperature resistance.

Chemical Composition

Ni-free alloy¹

ELEMENT	% OF WEIGHT
Co	Balance
Cr	28.0 - 30.0
Mo	5.0 - 6.0
Si	0.0 - 1.0
Mn	0.0 - 1.0
Fe	0.0 - 0.50
C	0.0 - 0.02



CoCr part microstructure after recommended heat treatment

Applications

- Turbine and engine components
- Design and watchmaking products
- Parts with thin walls or fine features
- Mechanical components needing wear and corrosion resistance

Features

- High strength
- Excellent wear resistance
- Good elasticity
- Good corrosion resistance
- High temperature resistance

Mechanical Properties²

	CONDITION	AS-BUILT ³	AFTER POST HEAT TREATMENT ⁴
Ultimate Tensile Strength, MPa	ASTM E8	1200 ± 100	1260 ± 100
Yield Strength, MPa	ASTM E8	850 ± 100	900 ± 100
Elongation at break, %	ASTM E8	10 ± 2	15 ± 2
Hardness		na	500 ± 20 HV5
Density		approx. 100%	

¹ This chemical composition is suitable for biomedical applications

² Parts built on a ProX DMP 200 Direct Metal Production Printer

³ As-built refers to the state of components built on the ProX DMP 200 Direct Metal Printer before any post processing except removal from the build platform

⁴ Recommended post heat treatment at 800 °C for 1h (exact time dependent on part volume)



www.3dsystems.com

Warranty/Disclaimer: The performance characteristics of these products may vary according to product application, operating conditions, or with end use. 3D Systems makes no warranties of any type, express or implied, including, but not limited to, the warranties of merchantability or fitness for a particular use.

©2017 by 3D Systems, Inc. All rights reserved. Specifications subject to change without notice. 3D Systems, ProX and LaserForm are registered trademarks and the 3D Systems logo is a trademark of 3D Systems, Inc.