

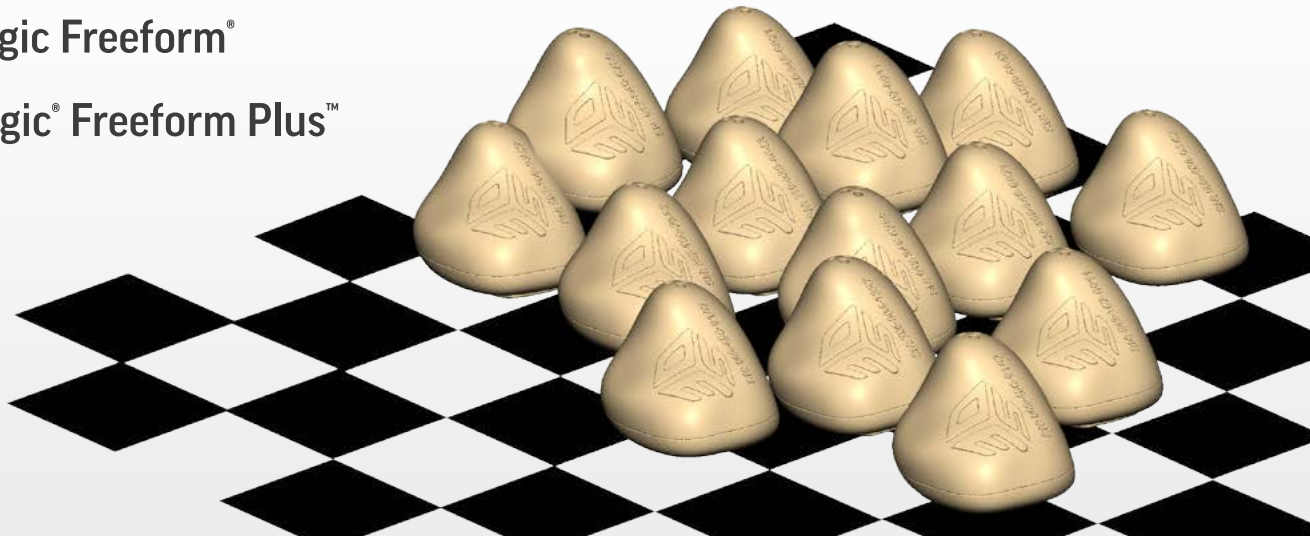


Introducing The New And Improved Geomagic Freeform® Product Line for 2017

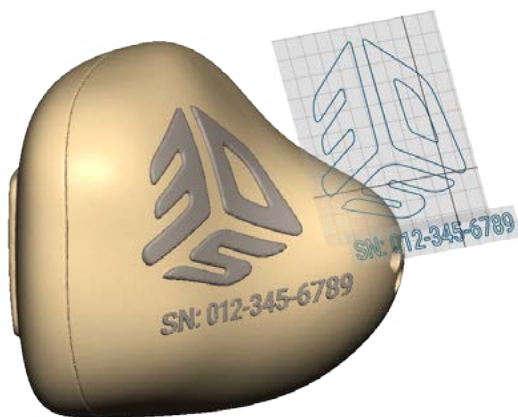
Sc Geomagic® Sculpt™

Ff Geomagic Freeform®

Ff+ Geomagic® Freeform Plus™

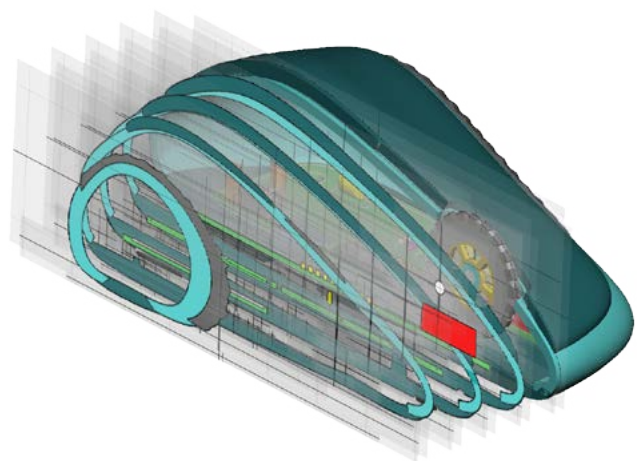


Geomagic Sculpt®, Freeform®, and Freeform Plus™ 2017 give you the power to design faster and more accurately than ever. With new capabilities and improvements to the existing tools, the industry's best 3D hybrid modeling solution streamlines workflow processes and tasks from design to documentation.



Streamline Mass Custom Design Workflows

The new Sketch Text tool easily generates outline font profiles that can be used to create 3D part labels. Shell Cut is a new tool that enables the creation of layered text or details as independent 3D objects that match the surface contours of the underlying part. Together, these new tools make mass-customization of any design easier than ever.



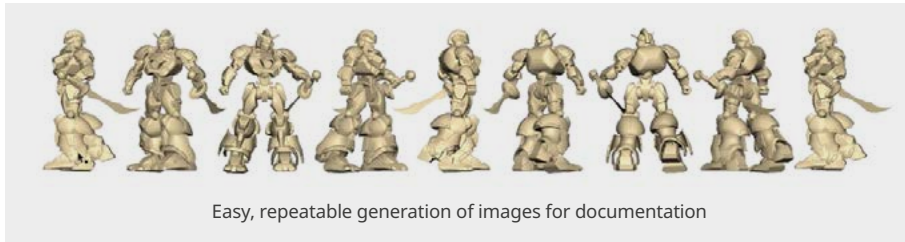
Improved Accuracy in Complex Designs

This 2D slicing tool analysis tool not only provides a dynamically interactive cross-section inspection tool, but also provides multiple methods and modes for extracting slice-based image stacks or profile curves. These functions can be used to identify voids, avoid collisions, validate clearance specifications, or reverse engineer the shape of a volume giving you the assurance that your design is accurate and correct.

Improved Documentation Capabilities

Advanced documentation tools enable streamlined communication with your customers.

- Easily create images for downstream documentation with the click of a button
- Generate a single image or sets of images based on orthographic or turntable views
- Utilize options that eliminate downstream editing time such as cropping, centering, object filtering, and background transparency (PNG)



Performance Optimizations

- Multi-piece Reduce-for-Export is now multi-threaded, reducing processing time as much as 50% or more based on one piece per logical core.
- Reduce file sizes by as much as 95% using optional File Compression on save.
- Optimizations to transparency improves framerate, increases rendering quality, and supports modes for either High or Low Resolution Clay See Through, allowing for the best balance of quality and redraw performance in any workflow situation.

Other Enhancements:

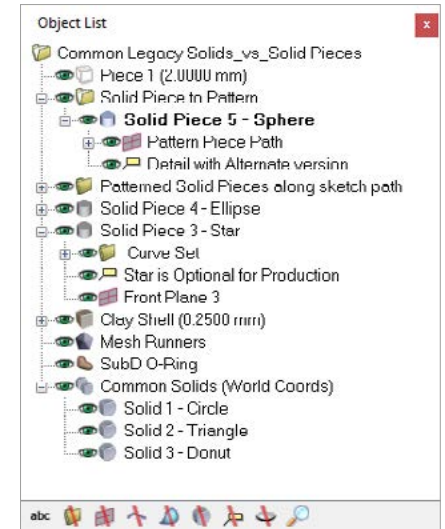
- Drag-and-drop to import clay files into an existing open project
- Measure angle capability added to the ruler tool
- New tessellation controls are now provided for solid-to-mesh conversions, including the import of CAD parts as mesh

New Feature Comparison

HIGH PROFILE NEW FEATURES	SCULPT	FREEFORM	FREEFORM PLUS
Sketch Text	●	●	●
Saved Views Enhancements	●	●	●
2D Slicer		●	●
Shell Cut Clay		●	●
Shell Cut Mesh			●
Wire Cut Mesh			●
Promote Common Solids to Solid Pieces			●

Promote legacy Common Solids to Solid Pieces

Freeform Plus v2017 has a new option to promote legacy Common Solids to be Solid Pieces, infusing them with new capabilities. Promoting a legacy Common Solid to be a Solid Piece enables more precise positioning control, per-piece attribute assignment, higher status in the Object List, and access to a broader set of palette tools.



Find out more at: [3dsystems.com/software/geomagic-sculpt](https://www.3dsystems.com/software/geomagic-sculpt), [3dsystems.com/software/geomagic-freeform](https://www.3dsystems.com/software/geomagic-freeform)

Specifications subject to change without notice. 3D Systems, Geomagic and the 3D Systems Logo are trademarks of 3D Systems, Inc. All other trademarks are the property of their respective owners.